

HYVA CYLINDER

714 04 287



type: **UMB 129-3-1000-K212-45-1/2"-HC**

tipping weight: **15-20 ton**

page # 1 / 2

Stage diameters 129 110 91	front view cylinder		<table border="0"> <tr><td>A</td><td>175</td></tr> <tr><td>ØC</td><td>150</td></tr> <tr><td>G¹</td><td>568</td></tr> <tr><td>I</td><td>356</td></tr> <tr><td>K¹</td><td>212</td></tr> <tr><td>M¹</td><td>106</td></tr> <tr><td>ØP</td><td>110</td></tr> <tr><td>ØQ</td><td>75</td></tr> <tr><td>S</td><td>364</td></tr> <tr><td>ØW</td><td>45</td></tr> <tr><td>X</td><td>45</td></tr> </table>	A	175	ØC	150	G¹	568	I	356	K¹	212	M¹	106	ØP	110	ØQ	75	S	364	ØW	45	X	45
A	175																								
ØC	150																								
G¹	568																								
I	356																								
K¹	212																								
M¹	106																								
ØP	110																								
ØQ	75																								
S	364																								
ØW	45																								
X	45																								

¹including 20 mm pull-out [tol. -5; +30 mm]

²cylinder is delivered including oil inlet swivel adapter and cup

specifications

total stroke ¹	1000 mm
dry weight cylinder only	54 kg
total volume	10.6 L
working volume	9.7 L
maximum pressure	220 bar
maximum pump flow	98 l/min
maximum allowable thrust first stage ³	17.5 ton
oil inlet	1/2" BSP

technical notes

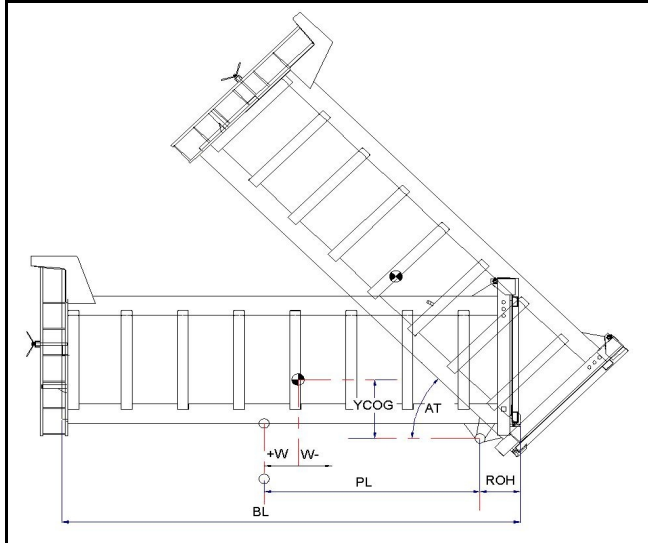
This cylinder is a lifting device only and may not be used as a structural member or be subjected to side load. Sideload and/or poor alignment might result in cylinder leakage.

Hyva therefore strongly recommends the use of a cradle, even in instances where the cylinder only tips to the rear or to the side. The cylinder is painted black RAL9005. For suitable hydraulic oils, please refer to data sheet OIL-0011. For details of available brackets and cradles, please refer data sheet 015BRA06.

Detailed calculations can be made using the HYVA Tipper Program, freely available from tipper.hyva.com.

³The cylinder thrust on the first stage (from the HYVA Tipper Program) must not exceed the maximum allowable (see specifications above).

tipping view



tipping weight

PL	1300			mm	1150		
YCOG	500			mm	500		
ROH	500			mm	500		
BL	4000	3600	3270	mm	3670	3300	3000
CYL w.r.t. COG (W)	-200	0	160	mm	-180	0	150
Tipping weight for full stroke of 46°				Tipping weight for full stroke of 52°			
Tipping weight	15	18	20	ton	15	18	20
Tipping weight for second last stage, up to 31°				Tipping weight for 2nd last stage, up to 35°			
Tipping weight	15	18	20	ton	15	18	20

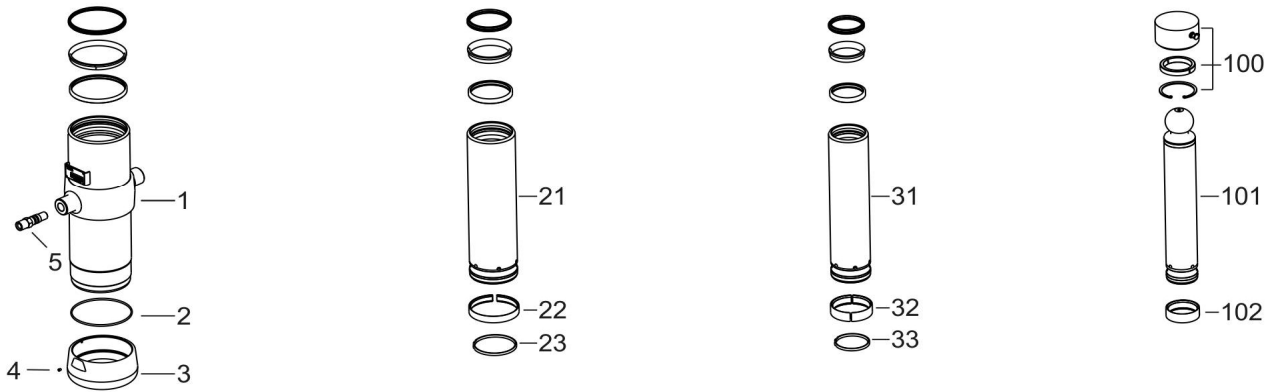
HYVA CYLINDER

714 04 287

type

UMB 129-3-1000-K212-45-1/2"-HC

page # 2 / 2



Spare part list

Pos	Part no.	Description	Qty.
1	73505400	BASE 149-0438-N0106	1
2	01226680	O-RING 145 X 4 70 SHORE	1
3	73101030	THREADED BOTTOM UM 149	1
4	01792571	LOCKING SCREW M6X12 INT. HEX. DIN 916	1
5	73103000	OIL INLET ADAPTOR UM 1/2"OT+O-RING	1
21	73604401	STAGE 129-0438-HC	1
22	71807129 K	SLIDER FL 129/GF 129 (2 X 1/2)	1
23	71812129 K	LIFTRING FL 129/HP 129	1
31	73603401	STAGE 110-0438-HC	1
32	71807110 K	SLIDER FL 110/GF 110 (2 X 1/2)	1
33	71812110 K	LIFTRING FL 110	1

Spare part list

Pos	Part no.	Description	Qty.
100	01745103	RETAINER KIT UMB D.75	1
101	73402401	PISTON B 091-0438-HC	1
102	71807091 K	SLIDER FL 091 (2 X 1/2)	1

Seal kit complete

Part no.	Description
719 04 430K	Complete packset: Consists of all packsets with packset grease and o-ring.